

ZNFU – Conservation Farming Unit

Hoe CF : Land Preparation and Basal Dressing

ZNFU-CFU-GART
Conservation Agriculture Programme
Supported by the Royal Norwegian
Government



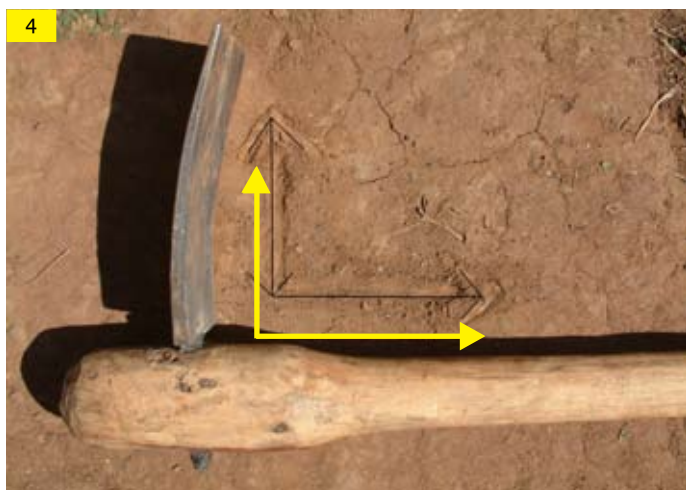
Equipment Needed: Chaka hoe, weeding hoe, fertiliser cups, Teren rope, 90cm row sticks, pegs.



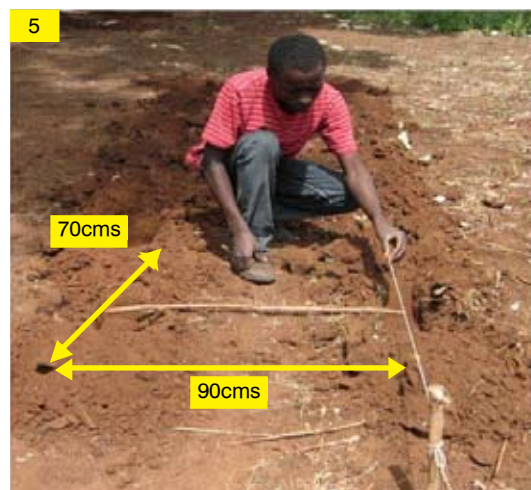
Residues: Don't burn. Erosion is reduced and run-off is reduced so rainwater is held in field.



Termites: Harvest residues and add organic matter to soil.



Chaka Hoe: Blade must be at right angle to shaft and firm. Learn how to fit blade and swing hoe properly.



Digging Basins: 90cms across row between centres of basins. 70cms between centres in the row



Depth & Length: 20cms deep to break pans. 30cms long (foot length) to accommodate different crop seeds. Width of Chaka blade.



Early Land Preparation: Start as early as possible in season. Work for 2 hours each morning only. Make sure whole family knows the job.



Finish Land Preparation: Finish by July or August before the hot season when work becomes harder. Be ready for the first planting rains.



Applying Basal Fertilisers: Fertiliser is expensive. Always use No. 8 cup. 1 cup is 2 bags/ha, 2 is 4 bags. Scatter in bottom of basin. **For Manure** use 2 handfuls per basin. Manure is better than fertiliser.



Liming: If you have grown Maize for many years your soils will be acid. Apply 2 cup of lime with the basal. This is 4bags/ha. Read CF Handbooks about liming.



Backfilling Basins: Backfill basins with hoe blade leaving only small hollow about 5cms deep.



Get Ready: What about legume seeds for rotations and food in February? What about joining the Government Coop to get the fertiliser subsidy? Don't rely on Maize alone. What if the rains are poor? Ask CFU staff about **Conservation Agriculture**. Attend CFU training sessions. Learn!